



Western Regional Landfill Inc.

Curtis Sackville

Gather around we'll TALK TRASH



"Elvis battles Alien, Britney weds Satan.
Man, who reads this garbage?"



S.O.S



UNIVERSITY OF
SASKATCHEWAN

Ball Park for Space and Price

19,000 people first estimate from 36 municipalities

X

Average waste production per year

X

1.5% Growth Rate

X

30 years

Estimated 45 acres of land

Approx Cost \$3,000,000

Per Capita

\$157 per person *with numbers still at 19,000*

Or Kindersley \$785,000 Coleville \$48,827

Rm of Oakdale \$40,506

\$ 230 per person *with numbers at 13,000*

Or Kindersley \$1,150,000 Coleville \$71,530

RM of Oakdale \$59,340

Lesson # 1

Money Talks



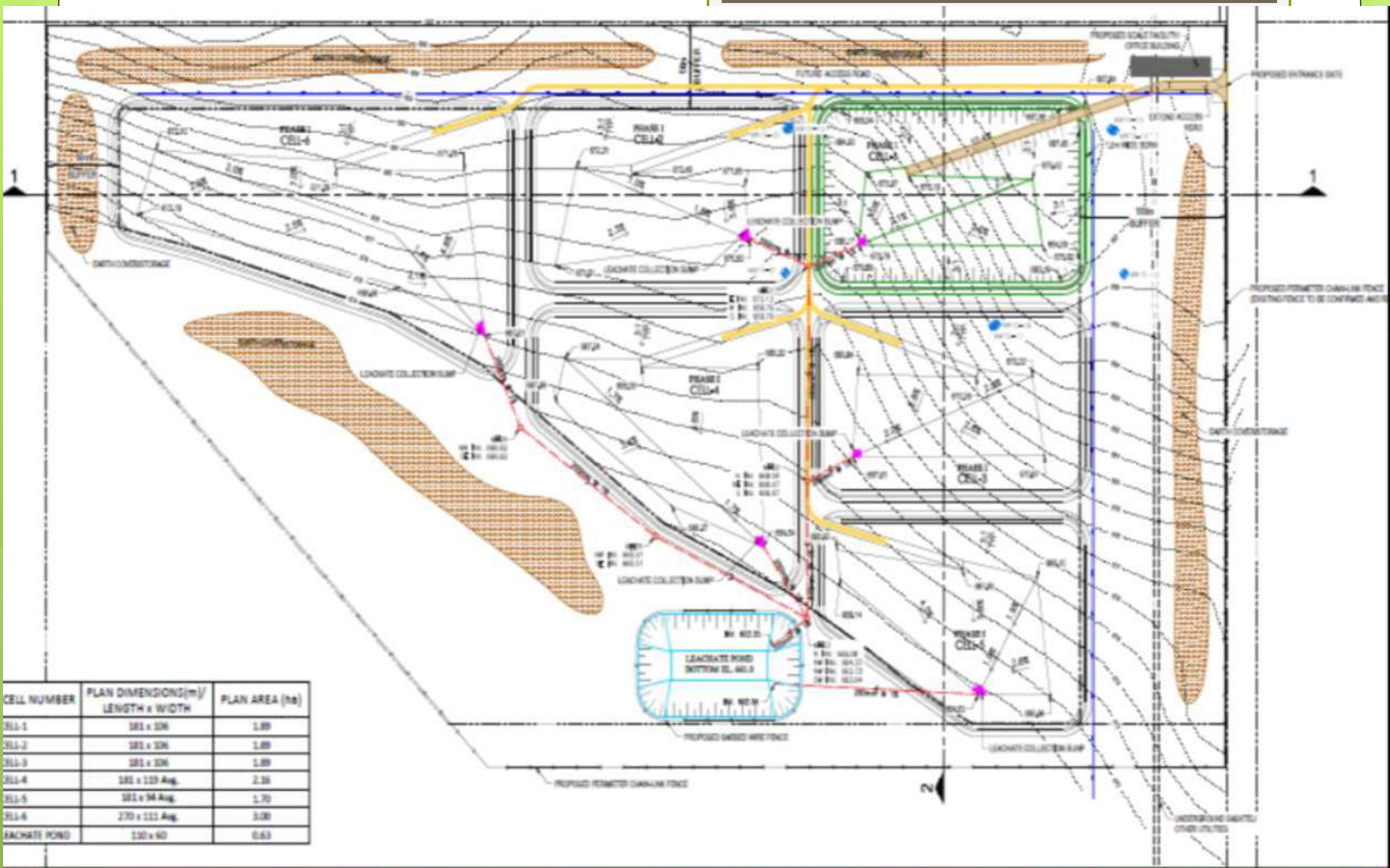
Rule # 2 don't forget the 7 P's

- P
- P
- P
- P
- P
- P
- P

WANNA BUILD A DUMP?

- Stantec Consulting
- SNC Lavalin
- Dillon Pinter
- Clifton and Associates
- Golder and Associates
- AE Com
- Rovers and Associates





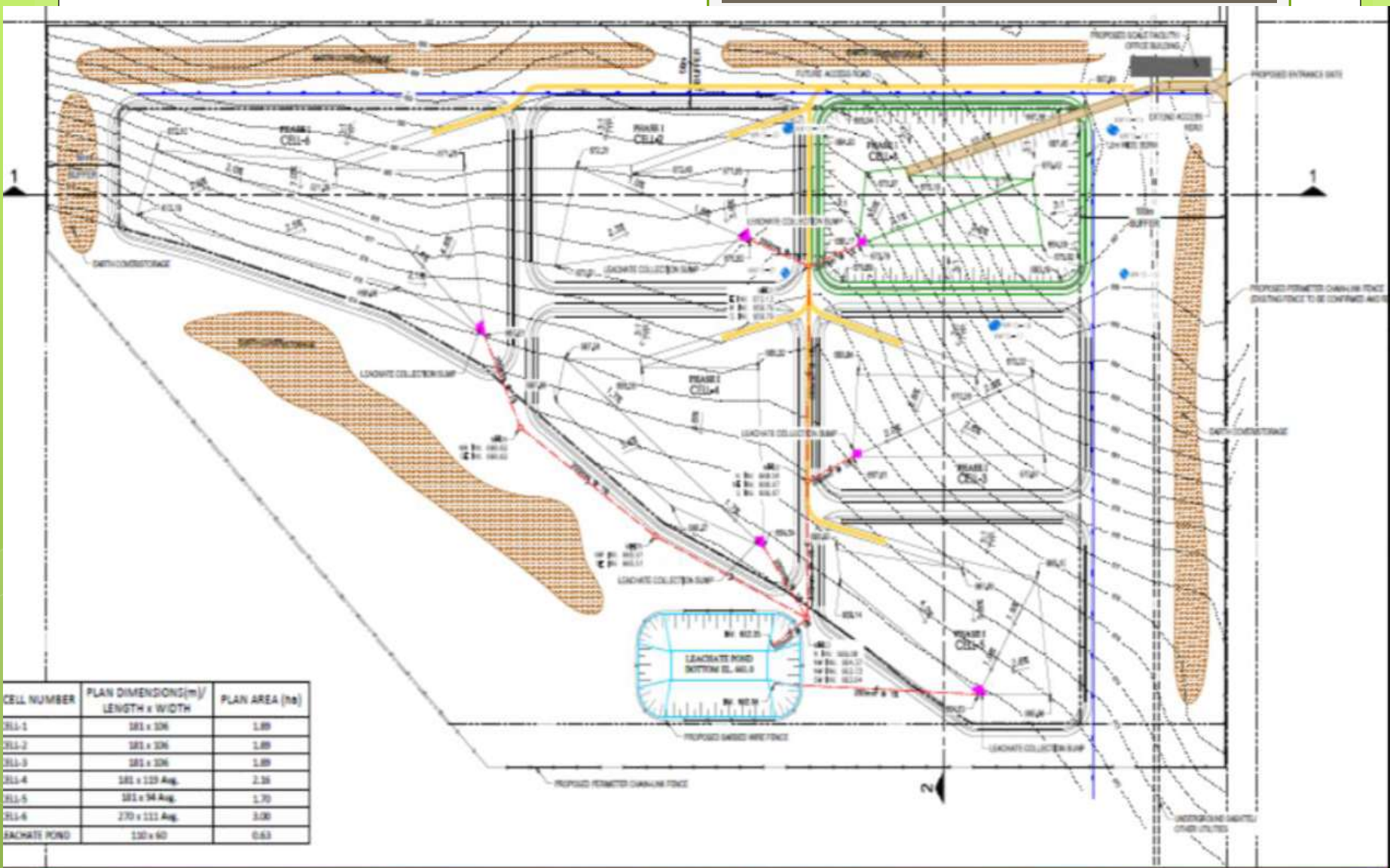
CELL NUMBER	PLAN DIMENSIONS(m)/ LENGTH x WIDTH	PLAN AREA (ha)
CELL-1	181 x 336	1.89
CELL-2	181 x 336	1.89
CELL-3	181 x 336	1.89
CELL-4	181 x 129 Avg.	2.35
CELL-5	181 x 94 Avg.	1.70
CELL-6	270 x 111 Avg.	3.00
LEACHATE POND	130 x 60	0.63

Municipality	Population	Percentage	Initial Final Design Requested (Based on Luseland Inclusion)	ACTUAL Final Design Required	Total Project Cost	Design Installation	Total Amount Remaining
				\$115,000	\$3,755,000		
1 Antelope Park 322	150	1.47%	\$1,598.26	\$1,686.71	\$55,074.80		\$53,388.09
2 Brock	127	1.24%	\$1,353.19	\$1,428.08	\$46,630.00		\$45,201.92
3 Coleville	311	3.04%	\$3,313.72	\$3,497.12	\$114,188.42	Received Apr. 28/17	\$110,691.31
4 Dodsland	212	2.07%	\$2,258.87	\$2,383.89	\$77,839.05		\$75,455.17
5 Flaxcombe	117	1.14%	\$1,246.64	\$1,315.64	\$42,958.35	Received Apr. 28/17	\$41,642.71
6 Kerrobert	1061	10.37%	\$11,305.01	\$11,930.67	\$389,562.43	Received Apr. 12/17	\$377,631.76
7 Kindersley	4678	45.74%	\$49,844.34	\$52,602.91	\$1,717,599.49	Received May 31/17	\$1,664,996.58
8 Kindersley 290	987	9.65%	\$10,516.54	\$11,098.56	\$362,392.20	Received May 2/17	\$351,293.63
9 Lacadena	572	5.59%	\$6,094.69	\$6,431.99	\$210,018.58	Received May 2/17	\$203,586.58
10 Marengo	47	0.46%	\$500.79	\$528.50	\$17,256.77		\$16,728.27
11 Mariposa 350	220	2.15%	\$2,344.11	\$2,473.84	\$80,776.38	Received May 10/17	\$78,302.53
12 Milton 292	312	3.05%	\$3,324.38	\$3,508.36	\$114,555.59		\$111,047.23
13 Newcombe 260	400	3.91%	\$4,262.02	\$4,497.90	\$146,866.14		\$142,368.24
14 Oakdale 320	258	2.52%	\$2,749.00	\$2,901.14	\$94,728.66	Received May 8/17	\$91,827.52
15 Plenty	131	1.28%	\$1,395.81	\$1,473.06	\$48,098.66	Received Apr. 13/17	\$46,625.60
16 Progress 351	260	2.54%	\$2,770.31	\$2,923.63	\$95,462.99	Received May 9/17	\$92,539.36
17 Smiley	60	0.59%	\$639.30	\$674.68	\$22,029.92		\$21,355.24
18 Winslow 319	324	3.17%	\$3,452.24	\$3,643.30	\$118,961.57		\$115,318.28
	10,227	100.00%	\$108,969.22	\$115,000.00	\$3,755,000.00		\$3,640,000.00

Garbage + Space = Expensive

$$\frac{X^a}{X^b} = X^{a-b}$$





CELL NUMBER	PLAN DIMENSIONS(m)/ LENGTH x WIDTH	PLAN AREA (ha)
CELL-1	181 x 306	1.89
CELL-2	181 x 306	1.89
CELL-3	181 x 306	1.89
CELL-4	181 x 129 Avg.	2.35
CELL-5	181 x 94 Avg.	1.70
CELL-6	270 x 111 Avg.	3.00
LEACHATE POND	130 x 60	0.63







Western Regional Landfill Inc.

LANDFILL RATES

SOLID WASTE RATES AND FEES GST APPLICABLE TO ALL RATES

Box 2228, Kindersley, SK S0L 1S0

landfill@wrli.ca

ITEM	FOUNDING MEMBER FEE		REGULAR FEE	
	KG	Tonne	KG	Tonne
Entry Fee - All vehicles				
Basic Tipping Fee	\$0.10	\$100.00	\$0.20	\$200.00
Special Handling - Must provide 24 hours prior notice (only available Mon- Fri) Minimum 1 Tonne Charge; + Burial Fee Items: Asbestos (must be properly bagged) Contaminated Soil	\$0.35	\$350.00	\$0.70	\$700.00
Burial Fee Based on amount of cover required	\$100.00 - for 14 yards or less \$210.00 each - 15 yards or more		\$200.00 - for 14 yards or less \$420.00 each - 15 yards or more	
Surcharge Items in Addition to Tonnage Charge	Refrigerant Handling (each) \$100.00 Propane Tanks (each) \$25.00 Tires (each) Passenger \$20.00 Agricultural Tires \$40.00		Refrigerant Handling (each) \$200.00 Propane Tanks (each) \$25.00 Tires (each) Passenger \$20.00 Agricultural Tires \$40.00	

Elm Trees - As per provincial Ministry of Environment regulations to control Dutch Elm Disease.

Basic Tipping Fee (September 1st - March 31st) Surcharge & Burial Fee Applied (April 1st - August 31)



WRLI

Western Regional Landfill Inc.