



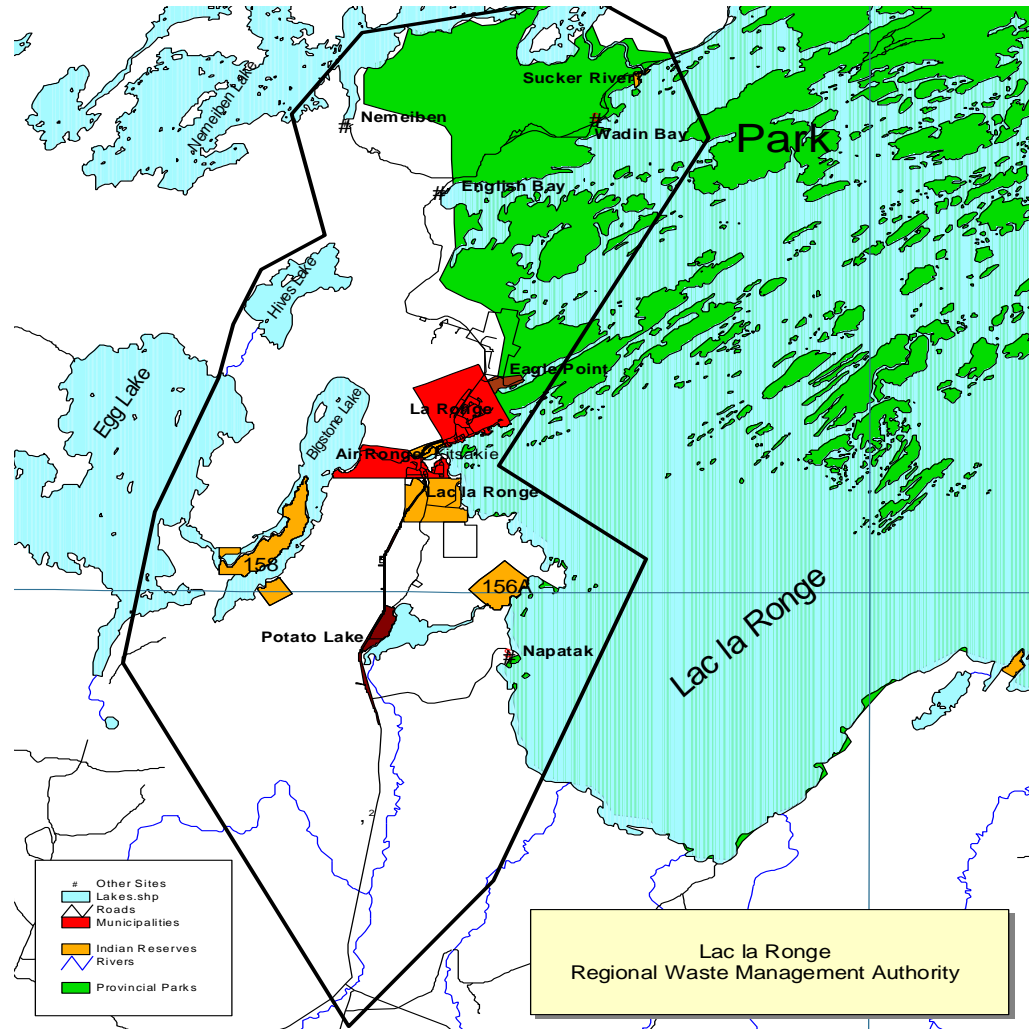
# Lac La Ronge Regional Waste Management Corporation

April 12, 2018

# Who are we?

- Formed in 2004 with 4 partners, Town of La Ronge, Village of Air Ronge, Lac La Ronge Indian Band, Northern Municipal Services.
- Parks, while not a formal partner contributes annually to the corporation
- For the past 15 years the corporation operated under the umbrella of the Town of La Ronge
- As of January 1, 2019 the LLRRWMC is a fully autonomous organization

# Current Region



# What are we?

- Operate a Recycle Depot and a Landfill that serves 7,500 residents
- The Recycle Depot is located in Town within a 670 sq m warehouse and outdoor drop off facility
- The landfill is located approximately 9 km south of La Ronge on Old Highway 2
- Collection services are provided by the member communities rather than the LLRRWMC

# Landfill



# Recycling Depot

- Basic processing equipment includes a processing bailer, an industrial paper shredder, a forklift and a trash compacter.
- There is a SARRC Eco Centre as well as a used cooking oil collection area within the compound.
- The Depot operates from 8 am to 4:30 pm Monday to Friday
- Outdoor drop off area available outside of the operating hours.
- We ship 66 bales every 4 to 5 weeks.

# We are nothing without our staff!



# What We Manage at the Recycle Depot

- We currently accept the following for recycling:
  - Card board
  - News print
  - Paper
  - Tin cans
  - Batteries
  - Printer and Toner Cartridges
  - Used cooking oil
  - SARRC suite of products
  - Agent for Diabetes Collection Bins



# Sample of our shipments



# Recyclables at the Landfill

- As with many landfills we collect scrap metal
  - Appliance Management
    - All appliances are delivered to the Recycle Depot for processing
    - Refrigerants are removed from all chilling equipment
    - 220 cords are removed
    - Copper tubing is recovered
    - Steel washer and dryer drums are salvaged and sold
    - Oven racks are salvaged
    - Once appliances have been stripped, we transport the remains to the landfill
- There is a used tire storage area at the landfill

# Propane Tanks

- Expired propane tanks were previously managed at the Landfill
  - This was another item that vandals were taking advantage of
- A protocol has been developed with a local propane supplier
  - Any propane tanks received at the landfill are transported to the local supplier
  - This allows for certain tanks to be refurbished
  - Others have the valves removed and are air properly prior to collection

*The protocol is a cost neutral arrangement*

# Challenges

- Falling commodity prices for recyclable materials
  - Strive to cover shipping costs
  - Can offer material management
- Composting
  - Very limited success with previous trials

# Future Opportunities

- Appliances
  - Opportunity to refurbish some of the equipment being dropped off
  - Develop a limited parts salvage operation
- Construction and Demolition Waste
  - Approximately 25 homes built in the area annually
  - Work with contractors to minimize the amount of waste hitting the landfill by segregating materials for re-use or shredding/chipping or better management
  - There can be value in certain items from demolition waste (windows, doors, fixtures etc.)
- Continue to increase public awareness.