



## Waste Diversion Strategy Implementation: Calgary Businesses and Organizations

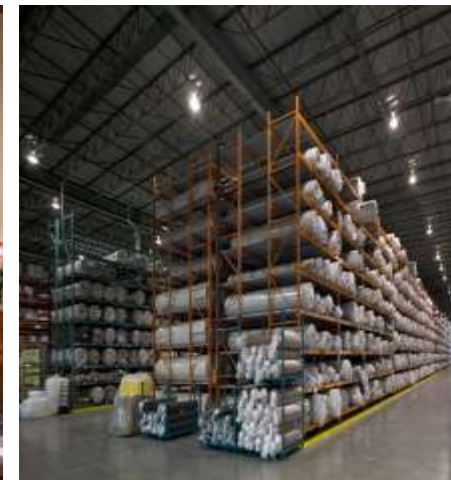
## Waste Diversion Target



Businesses and Organizations – 75% waste diversion by 2025

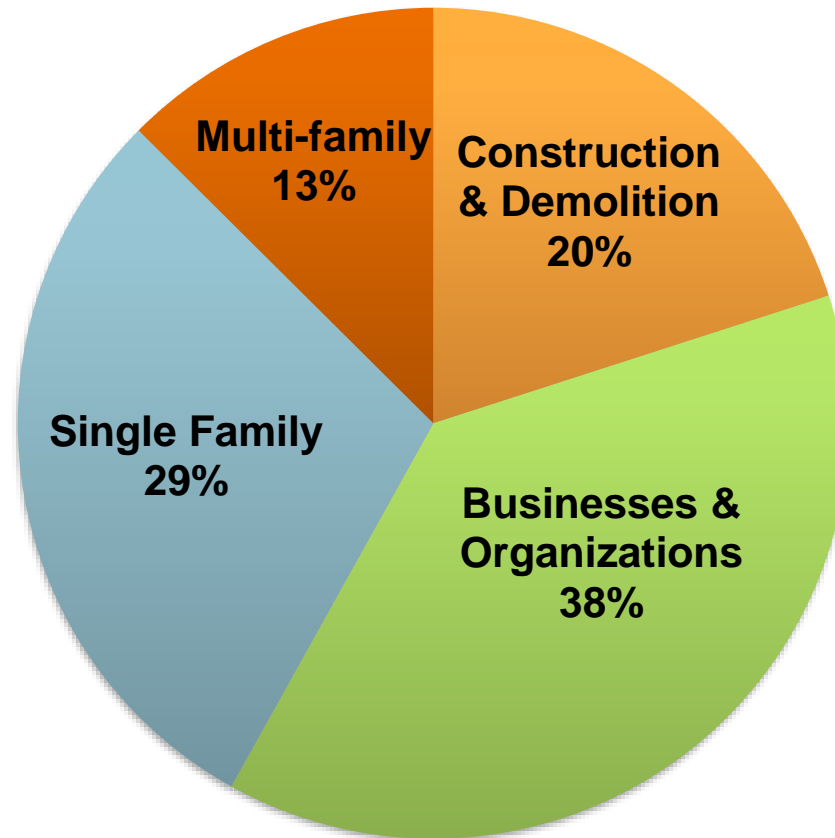
## The Industrial, Commercial, Institutional (ICI) Sector

- Hospitals, schools, offices, malls, restaurants, hotels, manufacturers, warehouses and other businesses
- 160,000 organizations in ICI sector, employing 780,000 employees (Calgary Metropolitan Area – 2013)
- Complex sector



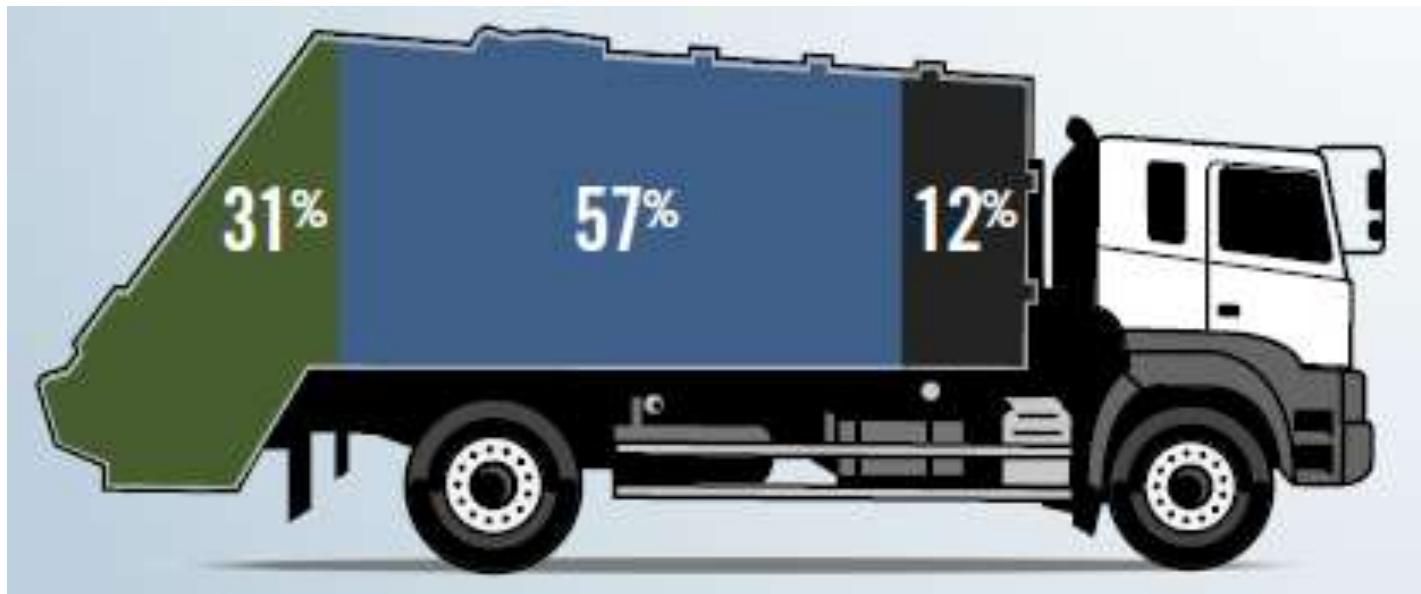


## Breakdown of waste



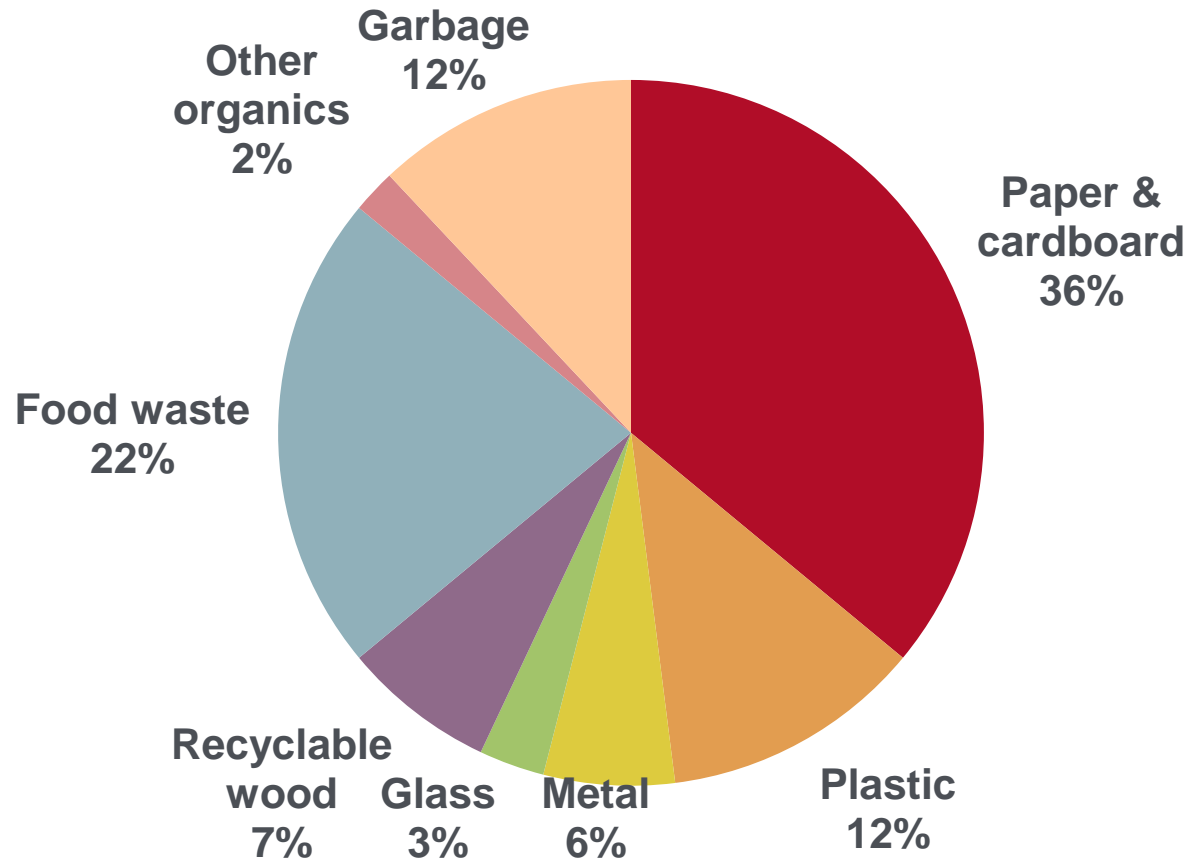
Source: City of Calgary 2014 Waste Composition Studies

## What's in business garbage?





## Breakdown of business garbage



## Landfill Myth





## ICI Strategy

- Started engagement with stakeholders in 2012
- Consultant researched best practices
- Best practices were ranked by stakeholders
- Stakeholders engaged on timeline



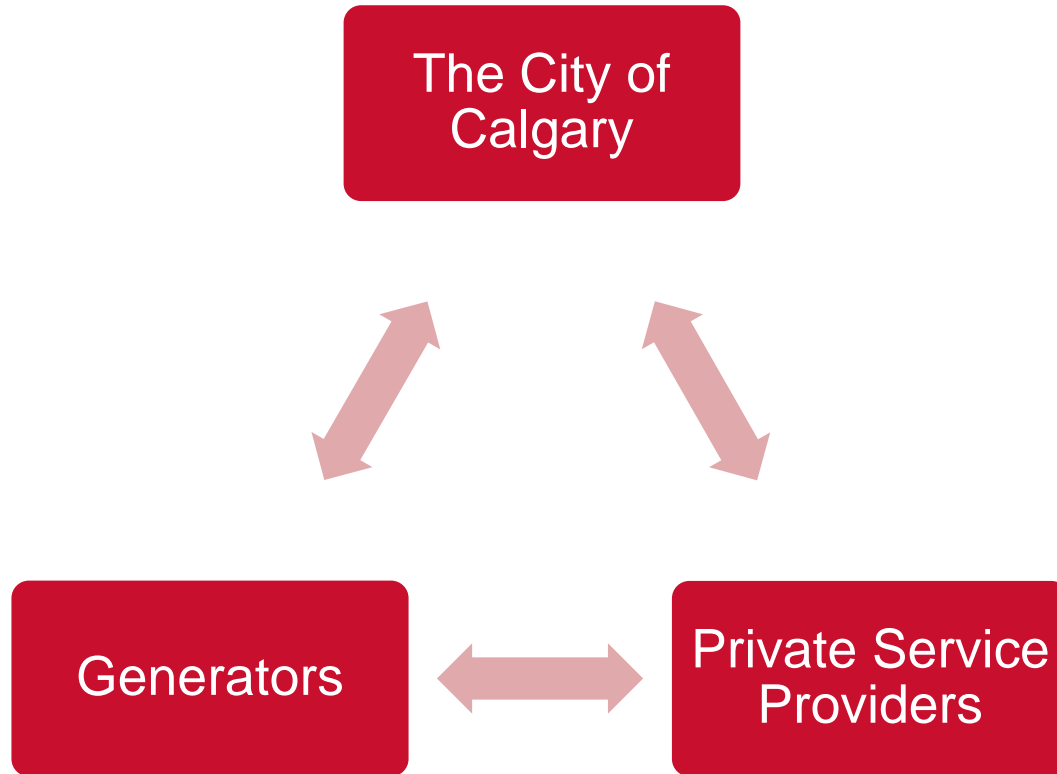


## The ICI Strategy

- The ICI strategy is a multi-faceted approach to meeting the diversion target of 75%
- The tools in the ICI toolbox include:
  - Bylaw requirements for diversion programs
  - Financial incentives using differential tipping fees at City landfills
  - Continued involvement of stakeholders through the ICI working group
  - Outreach and education



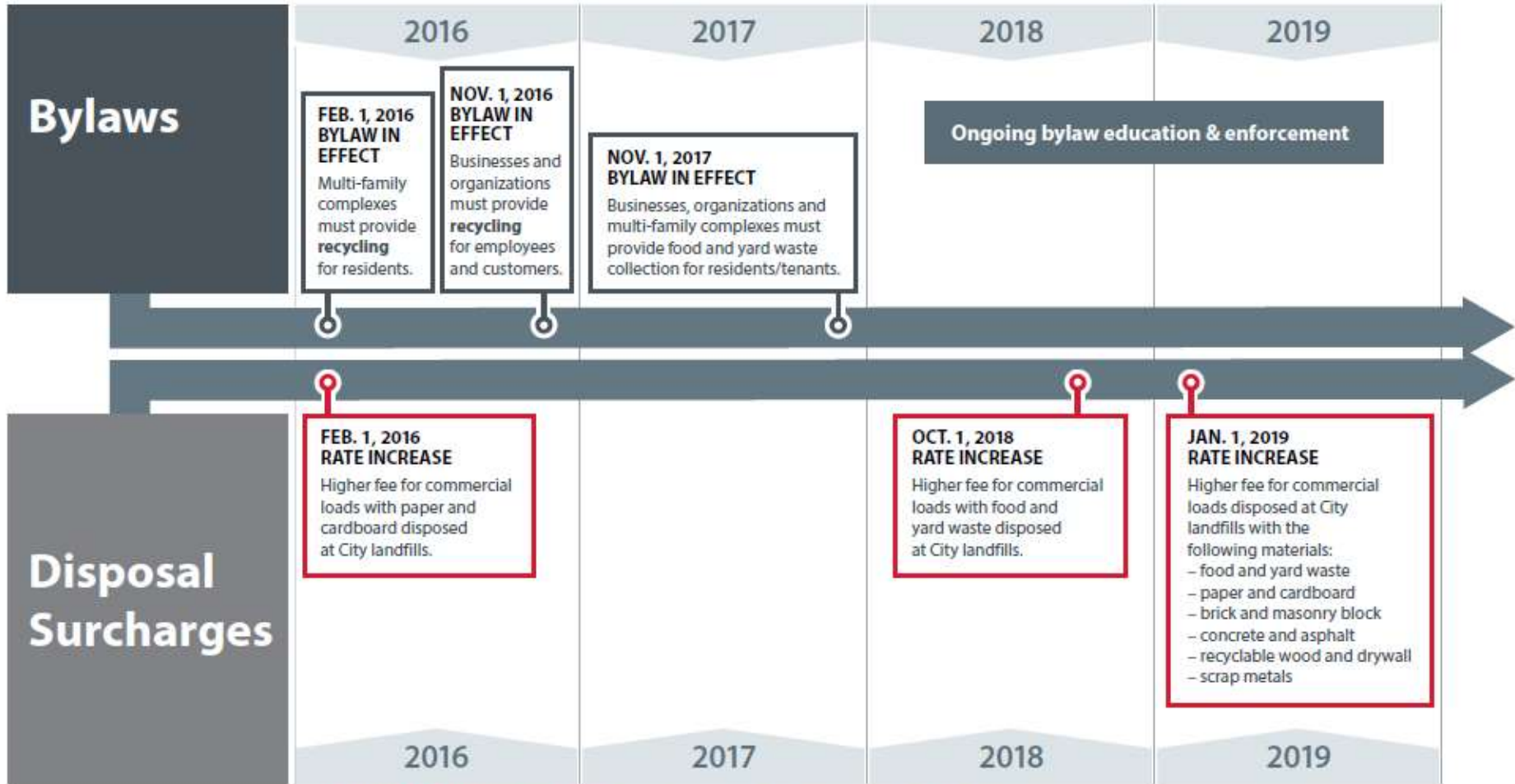
## Private Sector Solution





Waste Diversion Initiatives

Businesses, Organizations & Multi-family Complexes



Visit [calgary.ca/businessrecycling](http://calgary.ca/businessrecycling) for more information, tools and resources.

Published Nov. 2017 - 17-01 190357

# ICI Recycling Requirements



It's time to recycle more than this newspaper

Nov. 1, 2016 – New recycling requirements for business

Contact your collection company or visit [calgary.ca/businessrecycling](http://calgary.ca/businessrecycling) to learn more.



2016-1457



## Key Bylaw Components for ICI Recycling

Owner of a non-residential parcel must ensure:

- Required recyclable material generated on the parcel is collected and stored separate from other waste
- Recyclable material taken to be recycled

# Required Recyclable Materials

## Paper and cardboard



## Plastic



## Beverage containers



## Metal



## Glass



## Required Recyclable Materials

### Scrap metal

- fixtures and fittings
  - sheeting
  - automotive parts
  - metal plumbing and racks
- It **does not include** galvanized metal, rebar or coat hangers



### Wood

- dimensional lumber
  - wooden pallets
  - other items made of raw and unprocessed wood
- It **does not include** pressure treated wood, chemically treated wood, plywood, particle board, medium density fibreboard (MDF) or oriented strand board (OSB), furniture, finished or painted wood and tree stumps.



### Clear plastic film

- film wrap
  - shrink wrap
  - stretch wrap
  - plastics such as LDPE, LLDPE, HDPE and POF
- It **does not include** cellophane.



## ICI Food and Yard Waste Requirements

It's time to  
**compost at  
work** like you  
do at home







## Key Bylaw Components for ICI Food & Yard Waste:

Owners are required to:

- Collect and store food and yard waste separately from other materials
- Post clear signage on containers
- Provide education opportunities on a yearly basis or upon a new tenancy



## Food and Yard Waste Materials

### All food (raw and cooked)

Plate scrapings



Eggshells and dairy products



Meat, fish, shellfish and bones



Jams, sauces, salad dressings and cooking oil



Fruits and vegetables



Pastries, cookies, cakes and muffins



Bread, noodles, rice, beans and grains



Nuts, seeds, chips, popcorn and candy



### Food soiled paper

Paper plates and napkins



Coffee filters and tea bags



### Yard waste

Leaves



Plants and weeds



Branches and prunings

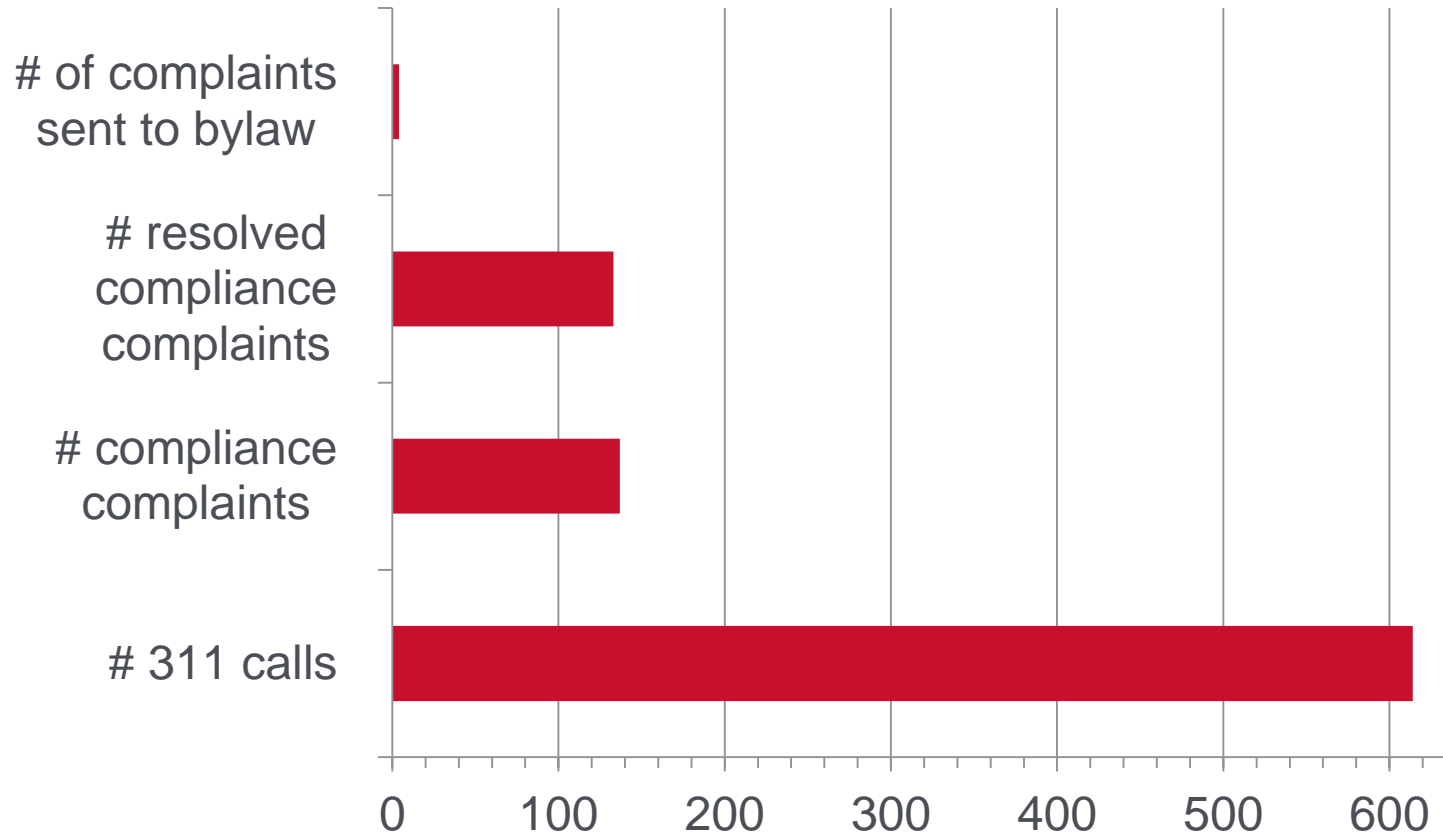


Grass clippings and sod



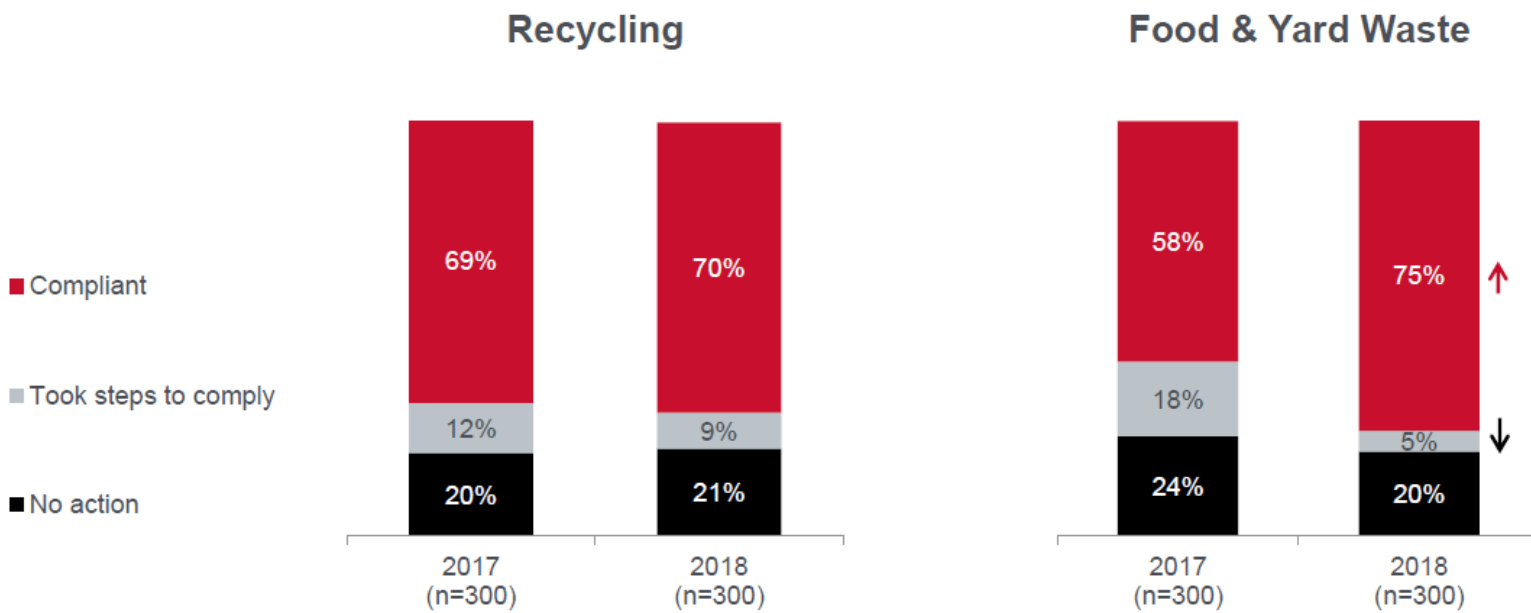


## Business & Organization Compliance (since Nov 1, 2016)





# ICI Compliance with Recycling and Food & Yard Waste Requirements



↑ denotes a significant increase since 2017  
↓ denotes a significant decrease since 2017



## Disposal Surcharge

- Incentive program to encourage source separation
- Worked together with ICI working group to determine what should be included
- Based on the recommendations, this currently this includes:
  - Paper and cardboard
  - Food and yard waste
  - Readily recyclable construction and demolition materials (e.g., clean wood, drywall)

## ICI Working Group

- Stakeholders → ICI Working Group
- Made up of businesses/organizations, haulers, processors
- Continually engaged regarding the implementation of outstanding elements of the strategy



## Waste Diversion Support - ICI Tools and Resources

- Community Learning Model
- Door knocking
- Posters
- Guides
- Waste audit
- Success stories
- Presentations
- Green team starter kit





## ICI Opportunities and Next Steps

- Compliance
  - Education-first approach to compliance/proactive compliance (e.g., door knocking)
- Participation
  - Communications campaign/waste diversion assistance (e.g., development of training tools)
- Assist with challenges
  - Community Learning Model/sector specific resources





## Questions